



**MOSAIC**  
GEORGIA

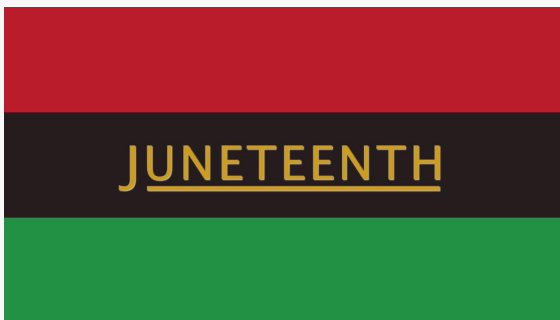
## Tesserae: June 2022

*'te-sə-rē, plural noun, the small pieces used to build a mosaic*

### In This Issue:

- **Recognizing the Whole:** Celebrating Juneteenth
- **Adding Your Piece:** *Become Whole Again* Annual Giving Campaign
- **Parts of the Whole:** Mosaic in Action
- **Building Connection:** Upcoming Trainings & Events
- **Internal Pieces:** Organization Updates
- **Making Mosaic:** Behind the curtain

### Recognizing the Whole: Celebrating Juneteenth



**Freedom Day: June 19th 2022**

Racism, specifically anti-Black racism, *is a root cause of sexual violence.*

On this Juneteenth, the holiday which recognizes the end to slavery in the United States, the Pennsylvania Coalition Against Rape examines the inequity and abuse that underscore all forms of sexual violence. [Read more](#)

#### Local Juneteenth Celebrations

Through art, cuisine, parades, and performance, Gwinnett County offers a multitude of ways to honor this important remembrance.

[June 16th: Let's Talk About Juneteenth, GC Public Library Duluth Branch](#)

[June 18th: Rhodes Jordan Park, Lawrenceville](#)

[June 18th: The Bowl at Sugar Hill, Sugar Hill](#)

[June 19th: Thrasher Park, Norcross](#)

[June 19th: JUNETEENTH Proud to be Me Set, Painting with a Twist, Lawrenceville](#)

[June 19th: Taste of Satira Celebration Dinner, Lilburn](#)

**Adding Your Piece: Annual Giving Campaign**



# HELP SURVIVORS OF SEXUAL ASSAULT BECOME WHOLE AGAIN

ANNUAL GIVING CAMPAIGN

Our inaugural **Annual Giving Campaign** runs through July 31st. The mosaic of services we offer to those who have experienced sexual violence is what puts our clients on the path to *Become Whole Again*.

Please contribute and help us reach our goal of \$75,000.

*The Community Foundation for Northeast Georgia will match your gift if you note "CFNEG Match" when you donate!*

Money raised will fund staffing and operations for critical services like crisis intervention and advocacy, legal services, forensic medical care, a 24/7 crisis line, education & training, trauma-informed programming, and our Children's Advocacy Center. Picking up the shattered pieces to create something intact requires our staff's intensive and skilled support as they address each and every one of these specific needs.

Please add *your* piece to our mosaic and make a pledge today.

Donate



### In It Together:

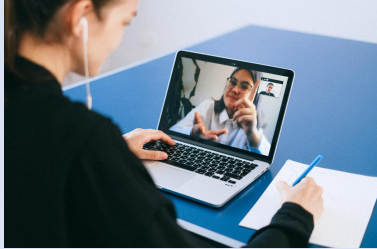
Mosaic Georgia sends a very big and very sincere *thank you* to [Kares 4 Kids Partners, Inc.](#) for their generous and much appreciated donation towards our Annual Giving Campaign!

## Parts of the Whole: Mosaic in Action



During Asian American and Pacific Islanders (AAPI) Heritage Month in May, our Managing Director Lindsay Ferreira sat on a panel at the **AAPI Mental Health Awareness Gathering** at The Water Tower in Buford. The event featured two discussions around mental health conditions, and community resources - including culturally relevant integrated care. According to the National Alliance on Mental Illness, the Asian American Pacific Islander community has the lowest help-seeking rate of any racial or ethnic group. [Read more](#) on barriers, education, and work being

## Building Connection: Upcoming Training & Events



*For RN's, NP's, MD's, DO's & PA's*

### 40 Hour Virtual Didactic SANE Training

Earn 40 Contact Hours in this [virtual, live-taught, interactive](#) didactic Adolescent & Adult SANE/SAFE 6-day Training starting **August 8th**. Deadline to apply is July 15, 2022.

[Read more and apply here](#)

### Other Medical Trainings for Nurses and Healthcare Professionals

[PRO/SANE Monthly Peer Review Sessions for Forensic Medical Exams \(FME\)](#)

#### [SANE Success Institute](#)

Accelerate the success and sustainability of your SANE program

### Mosaic Masterpieces - September 2022

Our 3rd annual fundraiser featuring works from local artists will be this September at the Gwinnett Environmental & Heritage Center. Keep an eye and an ear out for the date, time and details. We would love to see you there!

### Retreats for Survivors

[Saprea's ongoing 4-day in-person retreats in North Georgia](#)

## Internal Pieces: Organization Updates



If you are an RN looking to expand your training, consider joining our team as a contracted **Sexual Assault Nurse Examiner (SANE)**. Our SANEs provide **forensic evidence collection** and **medical care** to patients who have experienced a sexual assault.

[Read more and apply here](#)

## We're hiring!

Mosaic Georgia is looking to hire for two open positions. Click below to learn more about the roles and see if they align with your talents.

- [Victim Assistance Attorney](#)
- [Mental Health & Wellness Manager](#)

We're always in motion at Mosaic Georgia. Check in with our [Team Page](#) to keep an eye on the latest!



## Making Mosaic: The People Behind Our Mission

*A fun fact, interesting tidbit, or compelling story about the people at the heart of our organization.*

We asked Sara Cherry, Mosaic Georgia's Advocacy Manager, *What drew you to work at Mosaic Georgia?* "I've known since before I finished college that the work I wanted to do was with sexual assault survivors. Sexual violence is an issue I am passionate about and I feel lucky to have figured that out before even starting my career. I love working one on one with survivors but I also want to work in prevention & education, and Mosaic has space for both."

*Your donation is the strongest way to help empower those who have been impacted by sexual violence. Mosaic Georgia's myriad of services are **free of charge**. These donations allow us to continue this crucial support as well as enhance our offerings to the community. We are grateful for your support!*

Contribute to  
Mosaic

Mosaic Georgia is a private, nonprofit corporation that is a Children's Advocacy Center and Sexual Assault Center that strives for and demands safety, health and justice for children and adults victimized by sexual abuse, assault and trafficking. Please learn more at [www.MosaicGeorgia.org](http://www.MosaicGeorgia.org).

**24/7 Help Line: 866-900-6019**

EIN: 58-1762829

**Follow us on Social Media!**

